

# MICHELIN *AGILIS*

The new MICHELIN Agilis is even more economical, greater safety and stronger !\*

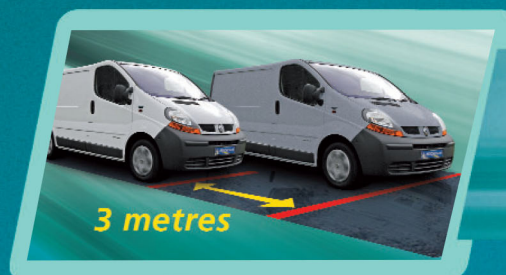


## • More economical to run

With tyre mileage increased by up to 30%, combined with reduced fuel consumption, "Fuel and Tyre maintenance" budgets can be cut by **3%\*** on average.

## • Greater safety

Throughout the whole of the tyre's life, the new MICHELIN Agilis brakes up to **3 metres shorter** in the wet\*\*.



## • Even more strength

The new MICHELIN Agilis maintains its predecessor's renowned impact resistance and reduces sidewall kerbing wear.

\* Internal test compared with MICHELIN Agilis 61/81/101.

\*\* Compared with the previous generation of MICHELIN Agilis. Tests carried out on tyres after 9,000 miles of use.



## Main dimensions available

195/70 R 15 C 104 R  
215/70 R 15 C 109 S  
225/70 R 15 C 112 S  
195/65 R 16 C 104 R  
195/75 R 16 C 107 R  
205/65 R 16 C 107 T  
205/70 R 16 C 106 R

205/75 R 16 C 110 R  
215/65 R 16 C 109 T  
215/75 R 16 C 113 R  
225/65 R 16 C 112 R  
225/75 R 16 C 118 R  
235/65 R 16 C 115 R



# New MICHELIN Agilis

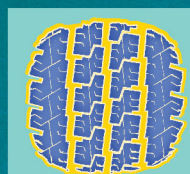
## Takes the best technologies from both Car and Truck tyre ranges.



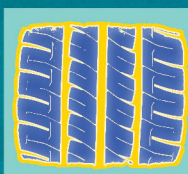
### 1 Even more savings thanks to the "Durable Contact Patch"

> Truck tyre design techniques have been adapted to MICHELIN Agilis to obtain a "squarer" footprint. Thus, there is greater control of contact between the tread blocks and the road in laden and high and pressure conditions.

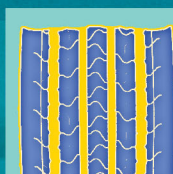
- Less rolling resistance meaning lower fuel consumption\*
- Combined with more abrasion resistant rubber compounds, MICHELIN Agilis lasts even longer\*



Previous generation  
MICHELIN Agilis  
footprint



New generation  
MICHELIN Agilis  
footprint



Truck tyre  
footprint

### 2 Even more safety thanks to the "Durable Security Compound"

> This new tread component is derived from car tyre technology. It improves the stability and rigidity of the rubber compounds throughout the tyre's service life. Combined with a more rigid tread pattern, **wet braking distances are shorter**, mile after mile.

### 3 Even more strength thanks to the sidewall kerbing protectors

> **The position of the 8 kerbing protectors** has been calculated for optimum protection in all conditions. Combined with a two-ply construction, the tyre's full mileage potential is easier to exploit.

\* Based on internal tests, compared to MICHELIN Agilis 61/81/101

- Section width : 195 to 235
- Aspect ratio : 75 to 65
- Wheel diameter : 15" to 16"



Michelin 855 200 507 RCS Clermont-Ferrand - Photos credit :  
Michelin - Le Public Système m - November 2007