

MICHELIN *Pilot Super Sport*

BORN FROM ENDURANCE RACING
FOR THE MOST EXHILARATING DRIVE!



**Specially engineered for super sport cars
and ultra high performance tuning**

**24 HEURES
DU MANS**

- **Safety in the most demanding conditions:**
The fastest tyre⁽¹⁾⁽²⁾
Technologies coming from 13 consecutive victories
at Le Mans 24 Hours
- **The best dry handling⁽³⁾**
- **Developed with BMW M, Ferrari and Porsche**

(1) The fastest lap time on a dry track. Tests carried out in 2010 by TÜV on tyre sizes 245/40ZR18Y and 235/35ZR19Y, compared to its 5 premium competitors (available on the market at the time).
(2) All the World's fastest cars are equipped with MICHELIN tyres. Bugatti Veyron and Shelby SuperCars exceeded the speed of 400 Kph with MICHELIN Pilot Sport PS2.
(3) The best dry handling. Tests carried out in 2010 by TÜV on tyre sizes 245/40ZR18Y & 235/35ZR19Y, compared to its 5 premium competitors (available on the market at the time).

MICHELIN *Pilot Super Sport*

A DESIGN AND TECHNOLOGIES INSPIRED BY MICHELIN'S COMPETITION HERITAGE

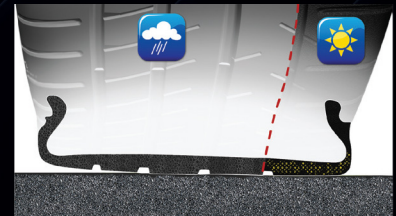
THE TWARON® BELT



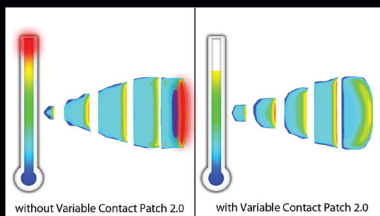
- At very high speed, the Twaron® belt guarantees greater stability.
- Thanks to its variable tension, the belt grips the centre of the tread more tightly than the shoulders.
- Centrifugal force is thus better controlled and forces are distributed more evenly.

DUAL-COMPOUND TECHNOLOGY

- A novel distribution of 2 different rubber compounds between the right and left-hand parts of the tread.
- Outer side : a novel carbon black-reinforced elastomer derived directly from the Le Mans 24 Hour Race. The result : extreme endurance even under the tightest cornering.
- Inner side : the latest generation of elastomers with exceptional wet grip to mould themselves to the slightest irregularities in the road surface and break the film of water.



VARIABLE CONTACT PATCH 2.0



Whether you're accelerating flat out in a straight line or cornering at high speed, you still get optimum grip.

- When cornering, the shape of the contact patch changes but the amount of rubber in contact with the road surface stays the same.
- MICHELIN Pilot Super Sport has benefitted from the latests digital simulation software used in the Aeronautics and Automobile industries. Thanks to these state-of-the-art tools, forces and temperatures are distributed more evenly over the contact patch.

ORIGINAL EQUIPMENT HOMOLOGATIONS

BRAND/MODELS	DIMENSIONS
FERRARI 458 ITALIA	FRONT: 235 35 ZR 20 (92 Y) XL K1 REAR: 295 35 ZR 20 (101 Y) K1
FERRARI 599 GTO	FRONT: 285 30 ZR 20 (99 Y) XL K1 REAR: 315 35 ZR 20 (110 Y) XL K1
ALPINA B5 BI-TURBO	FRONT: 255 35 ZR 20 REAR: 285 30 ZR 20
KOENIGSEGG AGERA (under development)	FRONT: 265 35 ZR 19 (98 Y) XL REAR: 345 30 ZR 20 (106 Y)
PORSCHE TURBO S (under development)	FRONT: 235 35 ZR 19 (91 Y) XL REAR: 305 30 ZR 19 (102 Y) XL

Speed indices
(Y) to Open ZR

Series
45 to 25

Seat Ø
18" to 22"