



# LTX<sup>®</sup> M/S<sup>2</sup>



## MICHELIN LTX MS<sup>2</sup> Best in Class for American SUVs and pick-ups

### Long mileage tyre

The new 3-D Active Sipes and optimized contact patch of MaxTouch Construction combine to improve significantly the mileage performance.



### Three Steel-Belt Durability\*

An extra steel belt in load ranges D and E provides incredible durability and strength to handle loads up to 13,500 lbs.

\*Using four LT265/75R16/E tyres inflated at 80 psi.



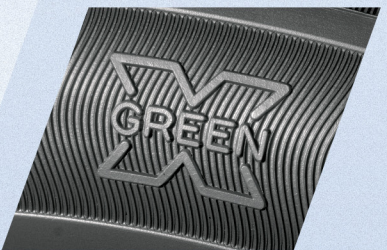
### The renowned comfort and handling of LTX MS<sup>2</sup> tyre

The LTX MS<sup>2</sup> tyre retains the famous and renowned features of the LTX MS tyre- comfort and handling.

### Green X for better fuel economy\* and for less CO<sub>2</sub> emissions"

Less bending of the tread blocks under torque thanks to the 3-D Active Sipes means less energy consumed.

\* All LT metric sizes meet the Michelin Green X standards for Fuel Economy which guarantees a level of energy efficiency among the highest in the market.



### Main sizes available according to the country

- LT235/85 R 16 120/116R TL
- P235/75 R 16 109T EXTRA LOAD TL
- LT245/75 R 16 120/116R TL
- LT265/75 R 16 123/120R TL
- LT235/80 R 17 120/117R TL



colorteam - 001910

