

MICHELIN *AGILIS*

The new MICHELIN Agilis is even more economical, greater safety and stronger !*

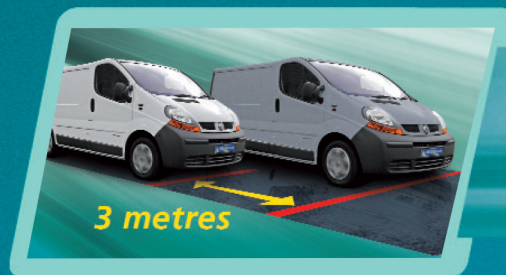


• More economical to run

With tyre mileage increased by up to 30%, combined with reduced fuel consumption, "Fuel and Tyre maintenance" budgets can be cut by **3%*** on average.

• Greater safety

Throughout the whole of the tyre's life, the new MICHELIN Agilis brakes up to **3 metres shorter** in the wet**.



• Even more strength

The new MICHELIN Agilis maintains its predecessor's renowned impact resistance and reduces sidewall kerbing wear.

* Internal test compared with MICHELIN Agilis 61/81/101.

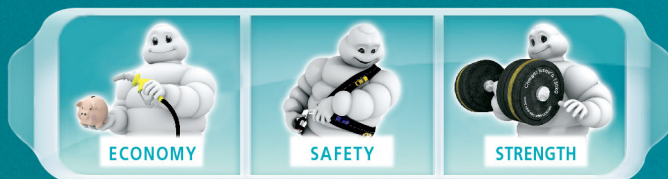
** Compared with the previous generation of MICHELIN Agilis. Tests carried out on tyres after 9,000 miles of use.



Main dimensions available

195/70 R 15 C 104 R
215/70 R 15 C 109 S
225/70 R 15 C 112 S
195/65 R 16 C 104 R
195/75 R 16 C 107 R
205/65 R 16 C 107 T
205/70 R 16 C 106 R

205/75 R 16 C 110 R
215/65 R 16 C 109 T
215/75 R 16 C 113 R
225/65 R 16 C 112 R
225/75 R 16 C 118 R
235/65 R 16 C 115 R



ECONOMY

SAFETY

STRENGTH



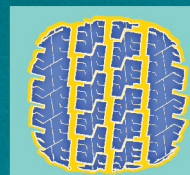
New MICHELIN Agilis Takes the best technologies from both Car and Truck tyre ranges.



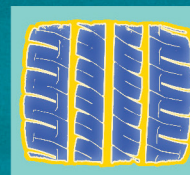
1 Even more savings thanks to the "Durable Contact Patch"

> Truck tyre design techniques have been adapted to MICHELIN Agilis to obtain a "squarer" footprint. Thus, there is greater control of contact between the tread blocks and the road in laden and high and pressure conditions.

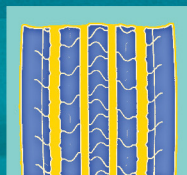
- Less rolling resistance meaning lower fuel consumption*
- Combined with more abrasion resistant rubber compounds, MICHELIN Agilis lasts even longer*



Previous generation
MICHELIN Agilis
footprint



New generation
MICHELIN Agilis
footprint



Truck tyre
footprint

2 Even more safety thanks to the "Durable Security Compound"

> This new tread component is derived from car tyre technology. It improves the stability and rigidity of the rubber compounds throughout the tyre's service life. Combined with a more rigid tread pattern, **wet braking distances are shorter**, mile after mile.

3 Even more strength thanks to the sidewall kerbing protectors

> **The position of the 8 kerbing protectors** has been calculated for optimum protection in all conditions. Combined with a two-ply construction, the tyre's full mileage potential is easier to exploit.

* Based on internal tests, compared to MICHELIN Agilis 61/81/101

- Section width : 195 to 235
- Aspect ratio : 75 to 65
- Wheel diameter : 15" to 16"



Michelin 855 200 507 RCS Clermont-Ferrand - Photos credit :
Michelin - Le Public Systema.m - November 2007